



Produced by

Audrey McKinnon, Head Teacher

headteacher@rosshall.nursery.glasgow.sch.uk

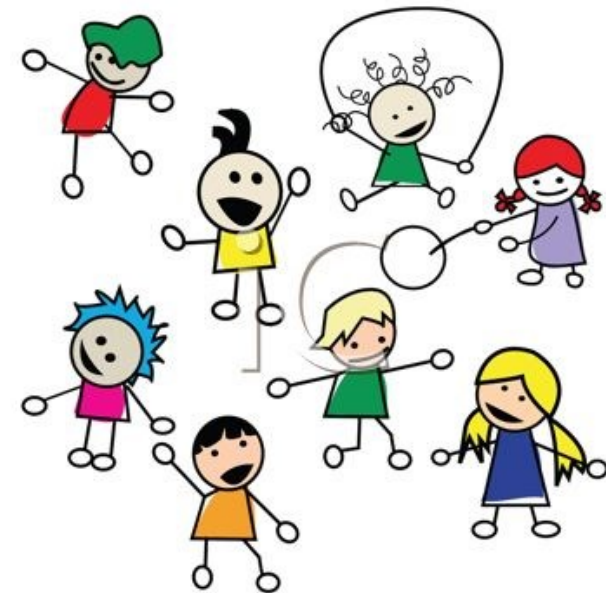
0141 882 3605

www.rosshall.nursery.glasgow.sch.uk



@rosshallnursery

Welcome to
Rosshall Nursery School



Your child will soon be coming to Rosshall Nursery School. This leaflet will tell you what to expect, and will outline some of the things you can do to help get your child ready for nursery, and to settle in well

Starting date

You will have been given a date when your child can start nursery. We like to give each child time when they settle so we limit the number of children starting each day. This means that if your child is upset staff have time to comfort them and help them to settle in.

Session times

We offer a session system in line with GCC policy. The times are as follows:

Morning-8.00am-12.45am

Afternoon-1.00pm-5.45pm

Parents can choose 6 sessions each week. This can be 3 full days, 2 full days and 2 half days, or 1 full day and 4 half days. You may be able to purchase additional sessions if you need them. If you wish more information about this, please speak to Mrs McKinnon, the Head Teacher.

Key workers

Every child is allocated a group and a Key Worker when they start nursery. The Key Worker will make sure your child settles well and makes good progress in their learning while they are in nursery. They will give you brief feedback each day. The name of your child's keyworker will be in your child's welcome booklet.



Settling

The settling process generally takes up to one week. However, settling goes at the child's pace, so for some children this may be longer. An adult who is known to the child should stay in the nursery for the first two days his allows everyone to become familiar with the nursery and the routines. If all is well, on the third day the adult can leave for a short time. We build up the time the child is at nursery over the course of the week: one hour on the first day; an hour and a half on day 2; two hours on day 3, and so on, increasing the time by half an hour each day. Most children are fully settled by the end of the first week. If a child does not settle well, we will reduce the time he or she attends nursery until he or she is settled. This might mean that the session is an hour for a few weeks, building up more slowly. Our experience over the years has found this to be effective. Please be guided in the settling process by your child's Key Worker.

During the current Covid situation, we are asking parents to attend for just one day with their child when settling, and to wear a mask when in the nursery building. The child's key worker will agree a settling plan with you and keep you informed of your child's progress in settling.

The Nursery Routine

During the play session there is a lot of Free Play. During this time children are encouraged to choose from a wide range of activities, some of which will be organised by the staff, and others will be self-selected activities which staff will oversee. You will receive information about what your child has been experiencing and learning via Seesaw, or by a note in your child's bag. Children will have a snack each session, which consists of healthy foods, such as fruit, low-sugar pancakes or muffins, or crackers and cheese. They will be offered milk or water to drink. Children will have the opportunity to play outdoors everyday, so we ask parents to provide a waterproof jacket and wellies.

There is video footage of our playrooms on our website-see the back page.